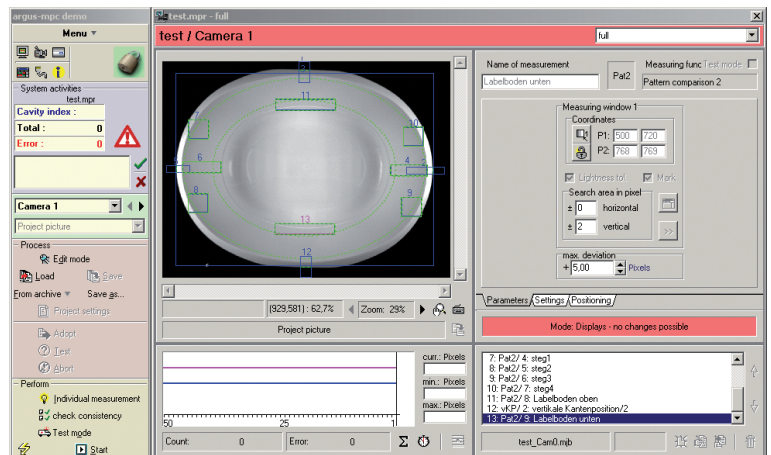


mevisco-IML

mevisco argus-mpc

mevisco image processing systems help you secure quality in many production areas. We have designed them with your wishes in mind. In constant dialog with customers, we implement the features the market demands.



argus-mpc image processing systems

argus-mpc image processing systems are advanced systems based on cutting-edge computer technology. They enable you to create optimized systems tailored to your specific tasks.

Simple: the user interface

The graphic user interface of argus-mpc image processing systems is easy to use. Even non-specialists quickly get the hang of changing parameters for inspection jobs or adjusting settings.

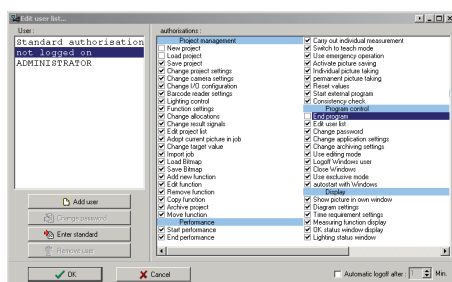
Tamper-proof: the user administration

Driven by practical experience, a user administration has evolved that makes it possible to allocate individual rights to each user. This way, you can selectively restrict access to the system and prevent any unauthorised changes.

The mevisco exclusive mode considerably hampers unauthorised access to the Windows operating system, making illicit tampering almost impossible.

Process control: the logging

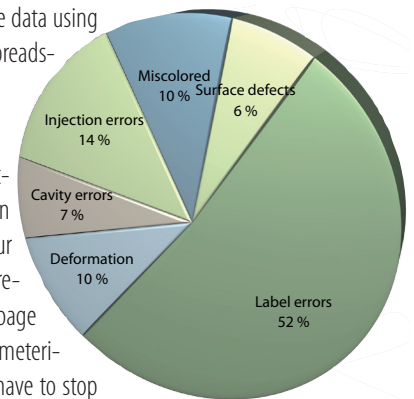
The logging provides for recording the measured values of each bottle, so you can apply this data to carry out extensive statistical analyses. The logged data is saved in a standard format.



It's easy to work with the data using common statistics and spreadsheet programs.

Productivity: PariP

The mevisco PariP function (parameterising in process) ensures your high productivity by reducing machine stoppage times. During the parameterising process, you don't have to stop the production machine and subsequently start it up again. You can use a test mode to activate and evaluate changes, then seamlessly adopt them as required – all during ongoing production.



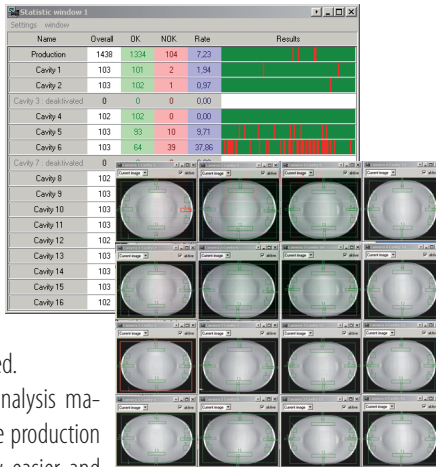
Project comparison: CrossCheck

The mevisco CrossCheck function checks whether more than one project accepts a product. This function was developed in cooperation with our largest IML customer. Here's how it works: one project each exists for a certain number of label types. When installing a new type, the new measurement, e.g. a pattern comparison, may be very similar to that for an existing type. That's when CrossCheck comes in. It determines whether the new measuring job also accepts as correct an already existing label type or project. In this way it ensures each project recognises exactly one label type, and each product is checked absolutely reliably. The function doesn't just avoid errors in setting up projects, it also makes operators aware of areas in the images that may cause conflicts.

Cavity allocation: statistics and visualisation

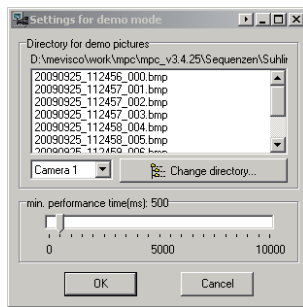
Each camera of the image processing system can be allocated one or more cavities. This allocation results in protocols, statistics and image displays for each individual cavity. It is also possible to set less than full-cavity production so that cavity-related analysis is always ensured.

The cavity-related analysis makes evaluation of the production process considerably easier and enables early recognition of tool problems.



Optimisation: image saving and offline mode

You can use the image saving function to create image sequences from the real production process that can then be fed into the offline version. The offline version comprises the complete software (without images being taken by cameras), so you can use it to train your staff and/or to optimise settings without disrupting the production process itself. The offline version can run on a contemporary Windows computer without restrictions.

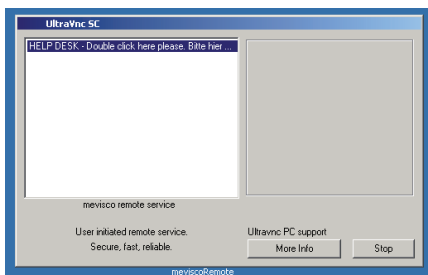


Safe recovery: restoration after failure

In the unlikely event that a serious malfunction occurs, the system can quickly be restored to an operable state. The systems are designed in such a way that the data for the bottle inspections is as a rule saved.

Support: remote maintenance

Should any technical or adjustment problems occur, mevisco can support you through our remote maintenance option. This lets us evaluate all the key parameters so we can quickly give you an accurate fault analysis and solve your problem directly.



Technical flexibility

The technical solutions required are just as varied as the tasks you want to perform. That explains why flexibility is at the core of the argus-mpc system. It means you can use flashed high-speed applications with area, megapixel and line cameras or simultaneous combinations of line cameras and area cameras.

argus-mpc/async provides for the operation of two independent image processing systems that share a single image processing CPU, cutting your investment costs considerably.

Overview of technical data

- CCD progressive-scan camera
- LED high-performance flash(es)
- Up to 50 measurements per second possible
- Convenient visual operating interface
- Process data visualisation
- PariP (parameterising in process)
- Custom user management for individual access rights to the various inspection functions
- Extensive log functions
- Fault image saving in the background
- Offline mode: offline operation without camera linkup
- Remote maintenance option via internet
- Recovery option: If the computer system is damaged, it can be quickly returned to an operable state, i.e. rapid restoration of image processing and therefore significantly reduced stoppage times
- Inspection software:
 - OCR
 - Pattern matching/comparison
 - Area measurement
 - customer specific measuring function

About mevisco

Since 1996, mevisco Gesellschaft für Bildverarbeitung und Visualisierung mbH & Co. Kommanditgesellschaft has been an expert partner for advanced solutions in industrial optical quality control. Teaming up with our customers, we provide image processing solutions for almost all production areas, covering everything from integration of a stand-alone system to turnkey complete plants with all the mechanical components.

Special solutions and periphery

We produce special solutions for the whole area of image processing. Our customised special solutions range from checking the location of bottle cams to checking the position of preforms in the machine.

We also supply high-end lighting systems such as high-performance LEDs or special control electronics.

mevisco

Gesellschaft für Bildverarbeitung und Visualisierung mbH & Co. KG

Bürgermeister-Smidt-Straße 24 - 28

D - 28195 Bremen

Tel.: +49 421 33 50 9 - 0

Fax: +49 421 33 50 9 - 36

email: info@mevisco.com

www.mevisco.com

MIT FREUNDLICHEN EMPFEHLUNGEN
KIND REGARDS